



# Portable Stack Rack Product Guide

Due to the volatility of the steel market, prices are subject to change without notice. Please call for best pricing.

## Stack Racks

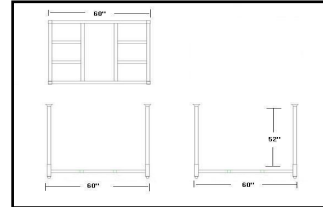
### Model SR

#### Dimensions:

Width 60"  
Depth: 60"  
Height: 52"  
Price:

\*\*Quantity Discounts Available

This stacking rack has a 3,000# capacity, and breaks down for storage and shipping purposes. Wire Mesh decking on base.



## Lumber Racks

### Model LR2

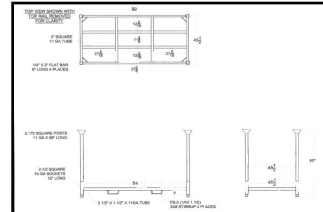
#### Dimensions:

Width 89"  
Depth: 45.5"  
Height: 52"  
Price:

\*\*Quantity Discounts Available

This lumber rack has a 4,000# capacity, and breaks down for storage and shipping purposes.

Plywood, and wire mesh decks are also available, call for details.



## Millwork Stack Racks

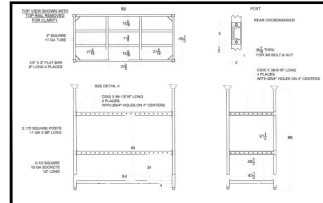
### Model HD

#### Dimensions:

Width 89"  
Depth: 45.5"  
Height: 98"  
Price:

\*\*Quantity Discounts Available

3,000# Capacity Millwork Shipping Rack. These sturdy shipping racks utilize pin and cup style stacking. Making stacking fast and reliable for the lift operator. Racks ship complete with 1/2" plywood decks and tie down cross members.



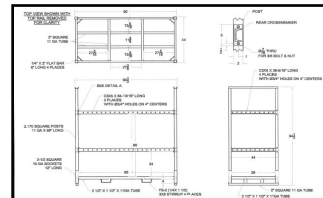
### Model HD2

#### Dimensions:

Width 90.5"  
Depth: 44"  
Height: 94"  
Price:

\*\*Quantity Discounts Available

3,000# Capacity Millwork Shipping Racks. These Millwork Racks are compatible with other popular manufacturers racks, and come with a C-Channel stacking style. They also ship with 1/2" plywood decks and tie down cross members.



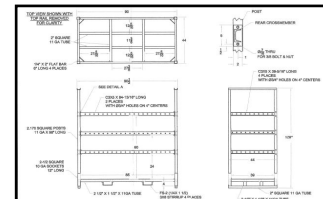
### Model HD3

#### Dimensions:

Width 90.5"  
Depth: 44"  
Height: 120"  
Price:

\*\*Quantity Discounts Available

Similar to HD2, but Extra Tall to accommodate larger millwork items. They ship complete with plywood decks and an extra row of tie down cross members.



PHONE: (574) 855-2017  
FAX: (574) 855-2017

**TIMBERLINE RACK & STORAGE, INC**  
**PO Box 878 GRANGER, IN 46530**

WEB: [WWW.TIMBERLINERACK.COM](http://WWW.TIMBERLINERACK.COM)  
EMAIL: [INFO@TIMBERLINERACK.COM](mailto:INFO@TIMBERLINERACK.COM)

Ask us about our ability to match your existing racks!